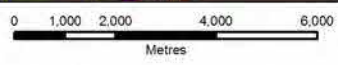


- Legend**
- Proposed Tower Location
  - Proposed Line Route
  - Existing Oldstreet-Woodland 400 kV Line
  - Existing 400 kV Line (To be upgraded)
  - 1km from the Proposed Development
  - 5km from the Proposed Development
  - County Boundary

**H** Landscape Unit



Issue	Date	Description	By	CHK'd
C	FEB 2015	Update following design review	M.S.	J.S.
B	DEC 2014	Issued	M.S.	D.B.
A	JAN 2014	Issued	M.S.	D.B.

Client: **EIRGRID**

Project: **NORTH-SOUTH 400 kV INTERCONNECTION DEVELOPMENT**

Title: **MEATH STUDY AREA LANDSCAPE CHARACTER AREAS**

Scale @ A3: **1:150,000 DRAFT**

Prepared by: M. Skiba  
Checked: D. Black  
Date: February 2015

Project Director: Deirdre Black

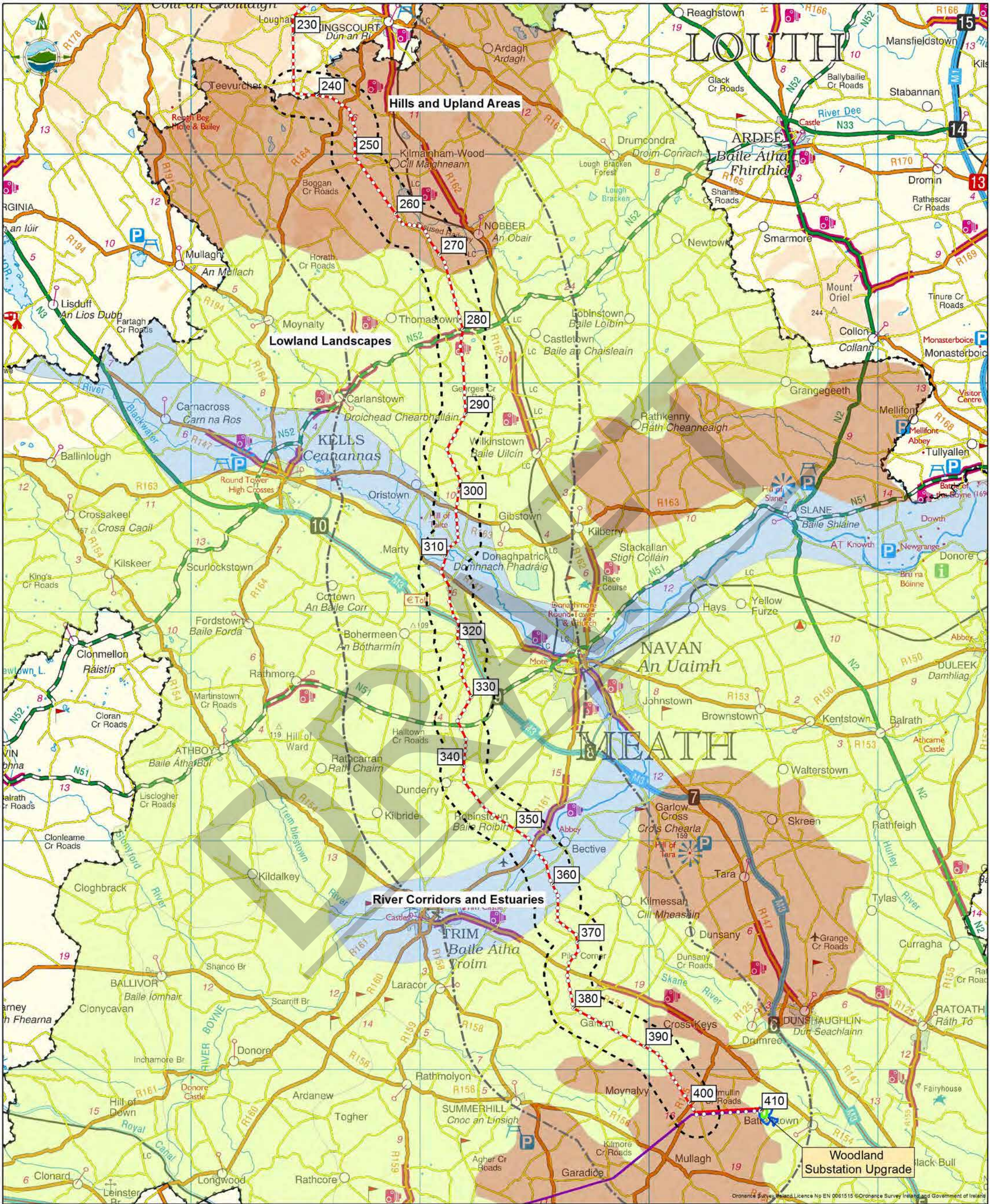
**URS TOBIN**

URS Ireland Limited  
410 / 411 Q House, 76 Furze Road  
Sandyford, Dublin 18  
Ireland  
tel: +353-(0)1-2933200  
fax: +353-(0)1-2933201  
www.urs.com

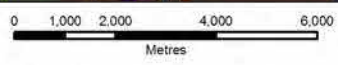
Issue: **C**

6244 **FIGURE 11.1 (MSA)**





- Legend**
- Proposed Tower Location
  - Proposed Line Route
  - Existing Oldstreet-Woodland 400 kV Line
  - Existing 400 kV Line (To be upgraded)
  - 1km from the Proposed Development
  - 5km from the Proposed Development
  - County Boundary



Issue	Date	Description	By	CHKD
C	FEB 2015	Update following design review	M.S.	J.S.
B	DEC 2014	Issued	M.S.	D.B.
A	JAN 2014	Issued	M.S.	D.B.

Client: **EIRGRID**

Project: **NORTH-SOUTH 400 kV INTERCONNECTION DEVELOPMENT**

Title: **MEATH STUDY AREA LANDSCAPE CHARACTER TYPES**

Scale @ A3: **1:150,000 DRAFT**

Prepared by: M.Skiba  
Checked: D.Black  
Date: February 2015

Project Director: Deirdre Black

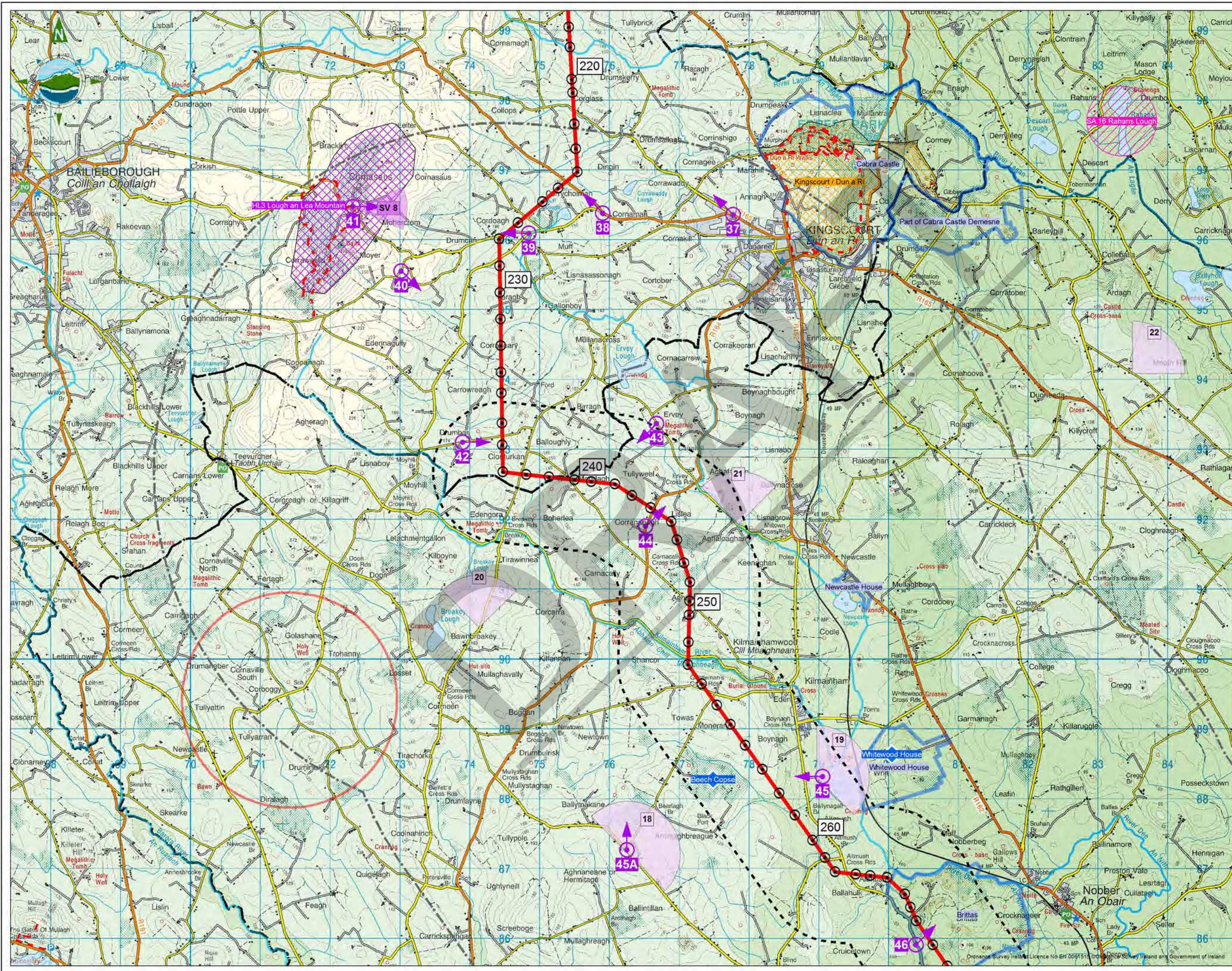
**URS TOBIN**  
URS Ireland Limited  
410 / 411 O House, 76 Furze Road  
Sandyford, Dublin 18  
Ireland  
tel: +353-(0)1-2933200  
fax: +353-(0)1-2933201  
www.urs.com

Issue: **C**

6244 **FIGURE 11.2 (MSA)**

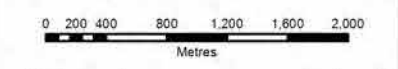
Ordnance Survey Ireland Licence No EN 0061515 ©Ordnance Survey Ireland and Government of Ireland





**Legend**

- Proposed Tower Location
- Proposed Line Route
- Photomontage Location
- 1km from the Proposed Development
- 5km from the Proposed Development
- County Boundary
- Protected Views & Prospects (Meath County Development Plan 2013-2019)
- Meath Landmarks (Meath Landscape Character Assessment)
- Potential Tourist Attractions (Meath Landscape Character Assessment)
- Designed Historic Gardens - Main Features Substantially Present (NIAH)
- Scenic Viewing Point (Cavan County Development Plan 2014 - 2020)
- High Landscape Value Area (Cavan County Development Plan 2014 - 2020)
- Area of Special Landscape Interest (Cavan County Development Plan 2014 - 2020)
- Area of Secondary Amenity Value (Monaghan County Development Plan 2013 - 2019)
- Walking Routes
- Rivers
- Lakes



Issue	Date	Description	By	Chkd
C	FEB 2015	Update following design review	M.S.	J.S.
B	DEC 2014	Issued	M.S.	D.B.
A	JAN 2014	Issued	M.S.	D.B.

Client:

Project:

**NORTH-SOUTH 400 kV INTERCONNECTION DEVELOPMENT**

Title:

**MEATH STUDY AREA LANDSCAPE CONSTRAINTS AND PHOTOMONTAGE LOCATIONS SHEET 1 OF 5**

Scale @ A3: 1:50,000 **DRAFT**

Prepared by: M.Skiba      Checked: D.Black      Date: February 2015

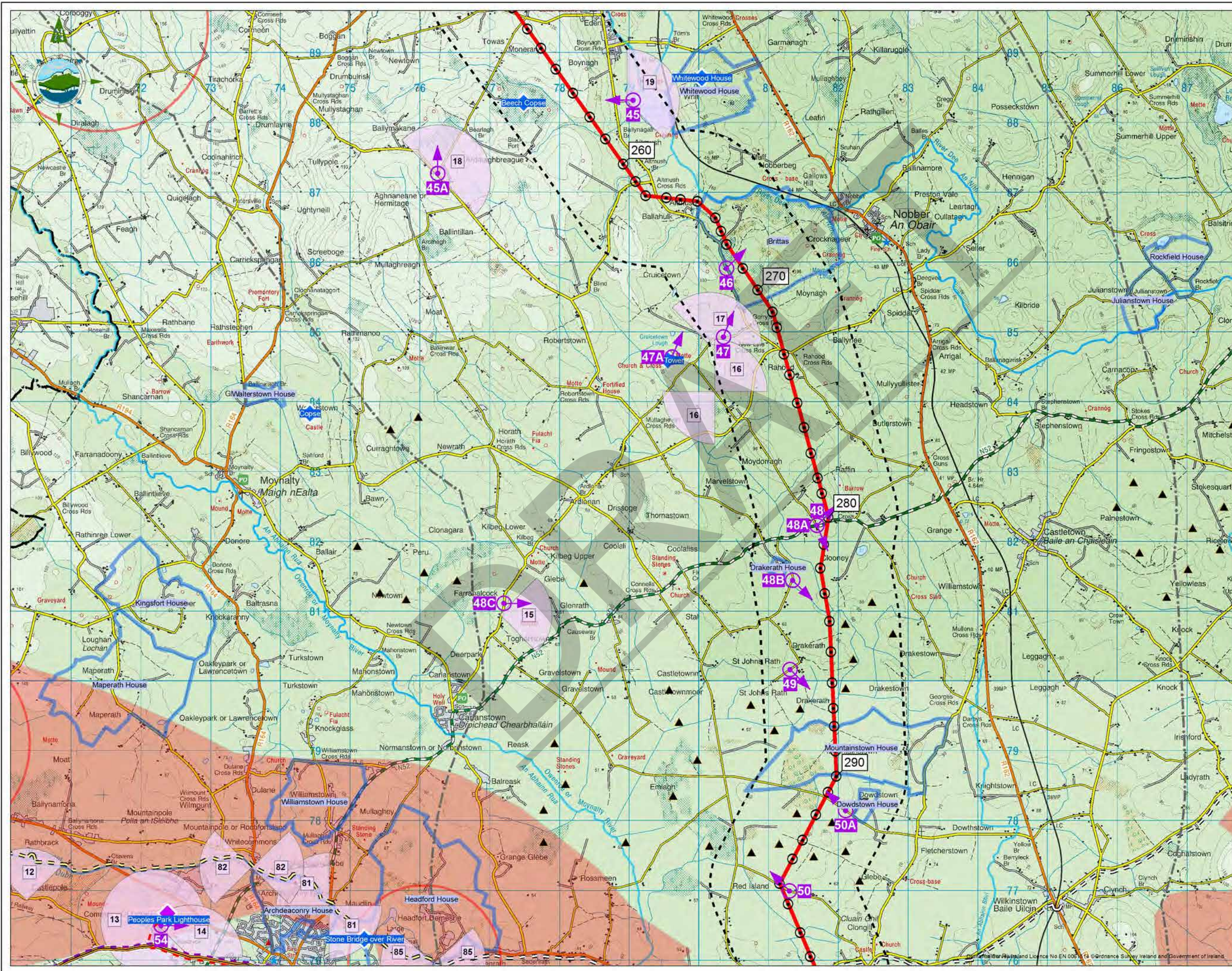
Project Director: Deirdre Black

URS Ireland Limited  
 410 / 411 Q House, 76 Furze Road  
 Sandford, Dublin 18  
 Ireland  
 tel: +353-(0)1-2933200  
 fax: +353-(0)1-2933201  
 www.urs.com

Issue: **C**

6244 **FIGURE 11.3 (MSA)**





### Legend

- Proposed Tower Location
- Proposed Line Route
- Photomontage Location
- 1km from the Proposed Development
- 5km from the Proposed Development
- County Boundary
- Protected Views & Prospects (Meath County Development Plan 2013-2019)
- Meath Landmarks (Meath Landscape Character Assessment)
- Potential Tourist Attractions (Meath Landscape Character Assessment)
- Designed Historic Gardens - Main Features Substantially Present (NIAH)
- Landscape Character Area of High Sensitivity (Meath Landscape Character Assessment)
- Existing Driving Routes (Meath Landscape Character Assessment)
- Existing Paths & Cycle Routes (Meath Landscape Character Assessment)
- Proposed Paths & Cycle Routes (Meath Landscape Character Assessment)
- Boyne Valley Driving Route
- Walking Routes
- Rivers
- Lakes
- Proposed Emlagh Wind Farm

0 200 400 800 1,200 1,600 2,000  
Metres

B	DEC 2014	Issued	M.S.	D.B.
A	JAN 2014	Issued	M.S.	D.B.
Issue	Date	Description	By	Check

Client:

Project:  
**NORTH-SOUTH 400 kV INTERCONNECTION DEVELOPMENT**

Title:  
**MEATH STUDY AREA LANDSCAPE CONSTRAINTS AND PHOTOMONTAGE LOCATIONS SHEET 2 OF 5**

Scale @ A3: **1:50,000 DRAFT**

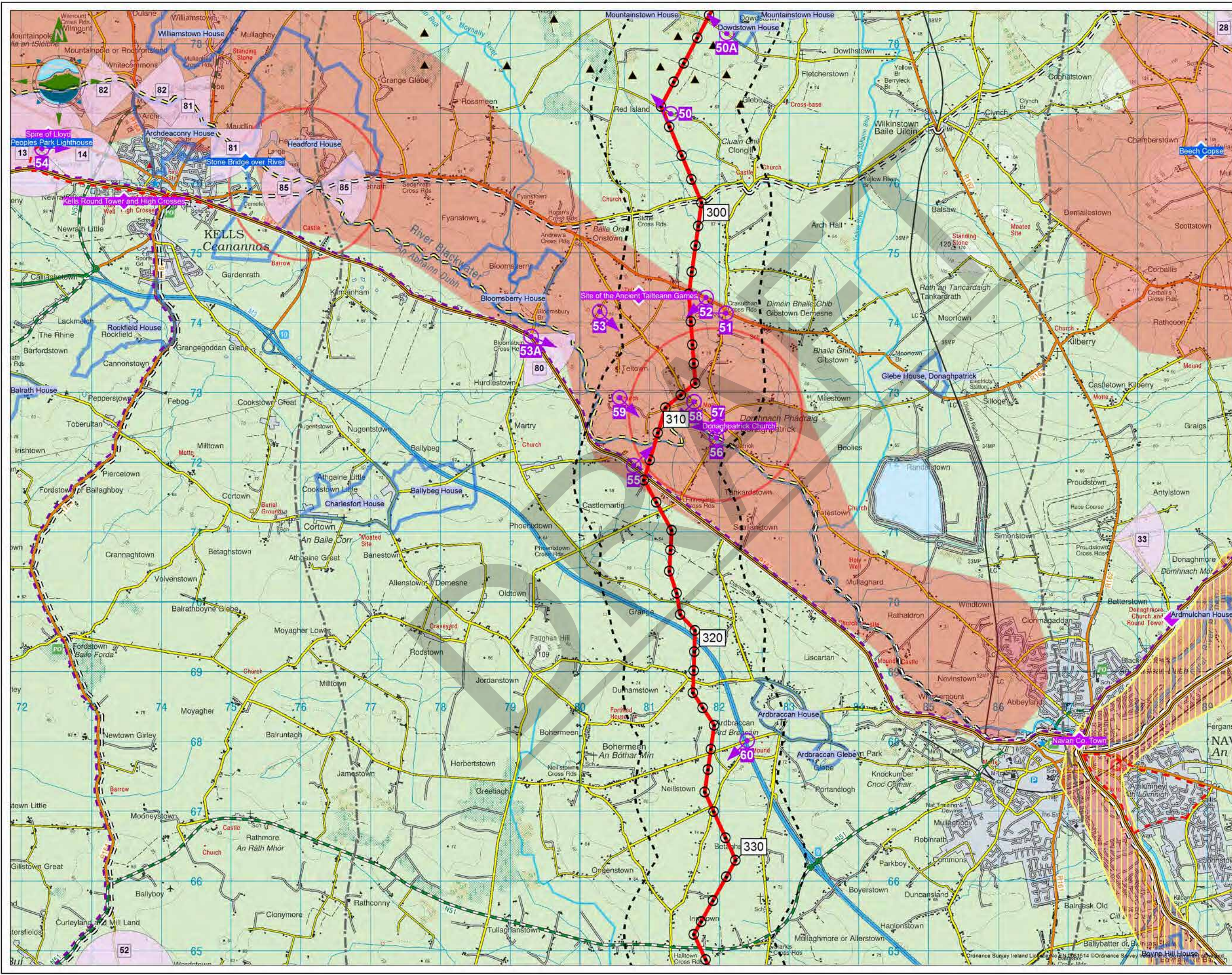
Prepared by: M. Skiba  
Checked: D. Black  
Date: December 2014

Project Director: Deirdre Black

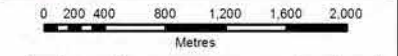
URS Ireland Limited  
410 / 411 O'House, 76 Furze Road  
Sandyford, Dublin 18  
Ireland  
tel: +353-(0)1-2933200  
fax: +353-(0)1-2933201  
www.urs.com

Issue:  
**B**





- Legend**
- Proposed Tower Location
  - Proposed Line Route
  - Photomontage Location
  - 1km from the Proposed Development
  - 5km from the Proposed Development
  - Protected Views & Prospects (Meath County Development Plan 2013-2019)
  - Meath Landmarks (Meath Landscape Character Assessment)
  - Potential Tourist Attractions (Meath Landscape Character Assessment)
  - Designed Historic Gardens - Main Features Substantially Present (NIAH)
  - Landscape Character Area of Exceptional Landscape Value (Meath Landscape Character Assessment)
  - Landscape Character Area of High Sensitivity (Meath Landscape Character Assessment)
  - Existing Driving Routes (Meath Landscape Character Assessment)
  - Existing Paths & Cycle Routes (Meath Landscape Character Assessment)
  - Proposed Paths & Cycle Routes (Meath Landscape Character Assessment)
  - Boyer Valley Driving Route
  - Boyer Valley Sites
  - Walking Routes
  - Rivers
  - Lakes
  - Proposed Emlagh Wind Farm



B	DEC 2014	Issued	M.S.	D.B.
A	JAN 2014	Issued	M.S.	D.B.
Issue	Date	Description	By	Chkd

Client:

Project: NORTH-SOUTH 400 kV INTERCONNECTION DEVELOPMENT

Title: MEATH STUDY AREA LANDSCAPE CONSTRAINTS AND PHOTOMONTAGE LOCATIONS SHEET 3 OF 5

Scale @ A3: 1:50,000 **DRAFT**

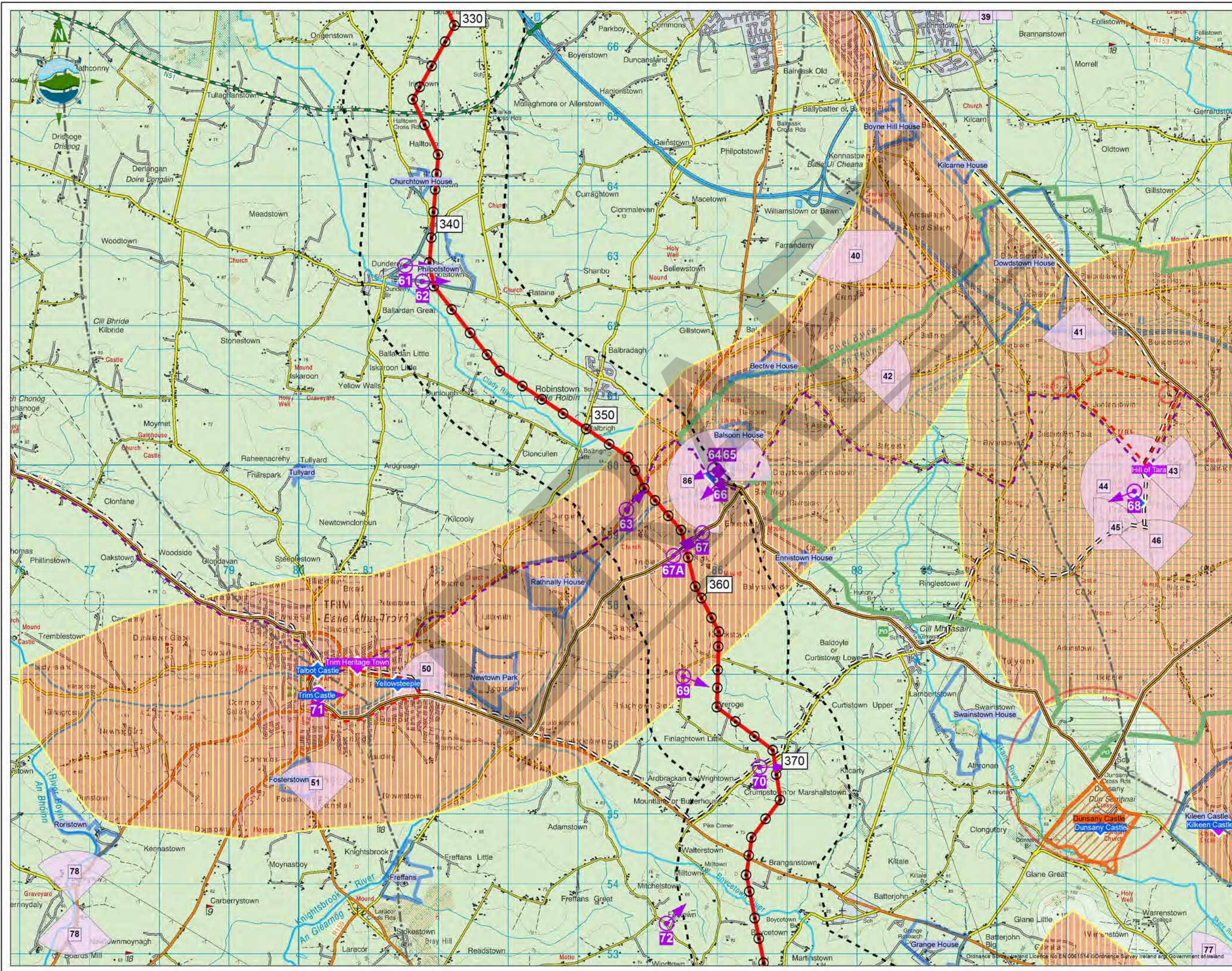
Prepared by: M.Skiba Checked: D.Black Date: December 2014

Project Director: Deirdre Black

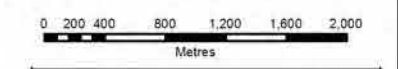
**URS TOBIN**  
 URS Ireland Limited  
 410 / 411 Q House, 76 Furze Road  
 Sandyford, Dublin 18  
 Ireland  
 Tel: +353-(0)1-2933200  
 Fax: +353-(0)1-2933201  
 www.urs.com

Issue: **B**





- Legend**
- Proposed Tower Location
  - Proposed Line Route
  - Photomontage Location
  - 1km from the Proposed Development
  - 5km from the Proposed Development
  - Protected Views & Prospects (Meath County Development Plan 2013-2019)
  - Draft Landscape Conservation Area
  - Meath Landmarks (Meath Landscape Character Assessment)
  - Potential Tourist Attractions (Meath Landscape Character Assessment)
  - Designed Historic Gardens - No Loss of Integrity (NIAH)
  - Designed Historic Gardens - Main Features Substantially Present (NIAH)
  - Landscape Character Area of Exceptional Landscape Value (Meath Landscape Character Assessment)
  - Landscape Character Area of High Sensitivity (Meath Landscape Character Assessment)
  - Existing Driving Routes (Meath Landscape Character Assessment)
  - Existing Paths & Cycle Routes (Meath Landscape Character Assessment)
  - Boyne Valley Driving Route
  - Boyne Valley Sites
  - Walking Routes
  - Rivers
  - Lakes



Issue	Date	Description	By	Check
B	DEC 2014	Issued	M.S.	D.B.
A	JAN 2014	Issued	M.S.	D.B.

Client:

Project:

**NORTH-SOUTH 400 kV INTERCONNECTION DEVELOPMENT**

Title:

**MEATH STUDY AREA LANDSCAPE CONSTRAINTS AND PHOTOMONTAGE LOCATIONS SHEET 4 OF 5**

Scale @ A3: 1:50,000 **DRAFT**

Prepared by: M. Skiba  
Checked: D. Black  
Date: December 2014

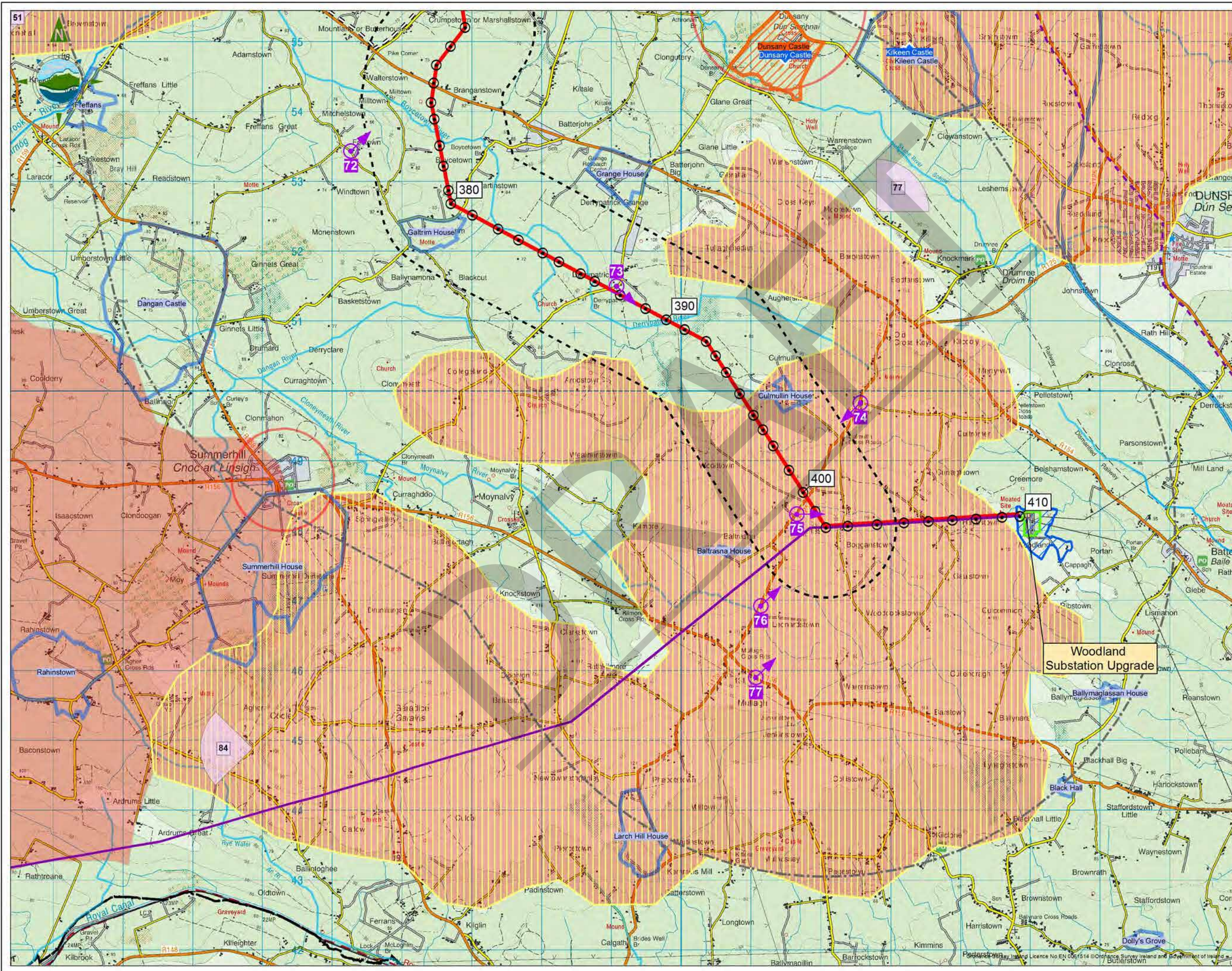
Project Director: Deirdre Black

URS Ireland Limited  
410 / 411 Q House, 76 Furze Road  
Sandyford, Dublin 18  
Ireland  
Tel: +353-(0)1-2933200  
Fax: +353-(0)1-2933201  
www.urs.com

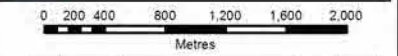
Issue: **B**

6244 **FIGURE 11.6 (MSA)**





- Legend**
- Proposed Tower Location
  - Proposed Line Route
  - Existing 400 kV Line (To be upgraded)
  - Existing Oldstreet-Woodland 400 kV Line
  - Woodland Substation Extension Area
  - Existing Woodland Substation Boundary
  - ESB Property Boundary
  - Photomontage Location
  - 1km from the Proposed Development
  - 5km from the Proposed Development
  - County Boundary
  - Protected Views & Prospects (Meath County Development Plan 2013-2019)
  - Meath Landmarks (Meath Landscape Character Assessment)
  - Potential Tourist Attractions (Meath Landscape Character Assessment)
  - Designed Historic Gardens - No Loss of Integrity (NIAH)
  - Designed Historic Gardens - Main Features Substantially Present (NIAH)
  - Landscape Character Area of Exceptional Landscape Value (Meath Landscape Character Assessment)
  - Landscape Character Area of High Sensitivity (Meath Landscape Character Assessment)
  - Existing Driving Routes (Meath Landscape Character Assessment)
  - Existing Paths & Cycle Routes (Meath Landscape Character Assessment)
  - Boyne Valley Sites
  - Rivers
  - Lakes



Issue	Date	Description	By	Checked
A	JAN 2014	Issued	M.S.	D.B.

Client:

Project:

**NORTH-SOUTH 400 kV INTERCONNECTION DEVELOPMENT**

Title:

**MEATH STUDY AREA LANDSCAPE CONSTRAINTS AND PHOTOMONTAGE LOCATIONS SHEET 5 OF 5**

Scale @ A3: 1:50,000 **DRAFT**

Prepared by: M. Skiba  
Checked: D. Black  
Date: January 2014

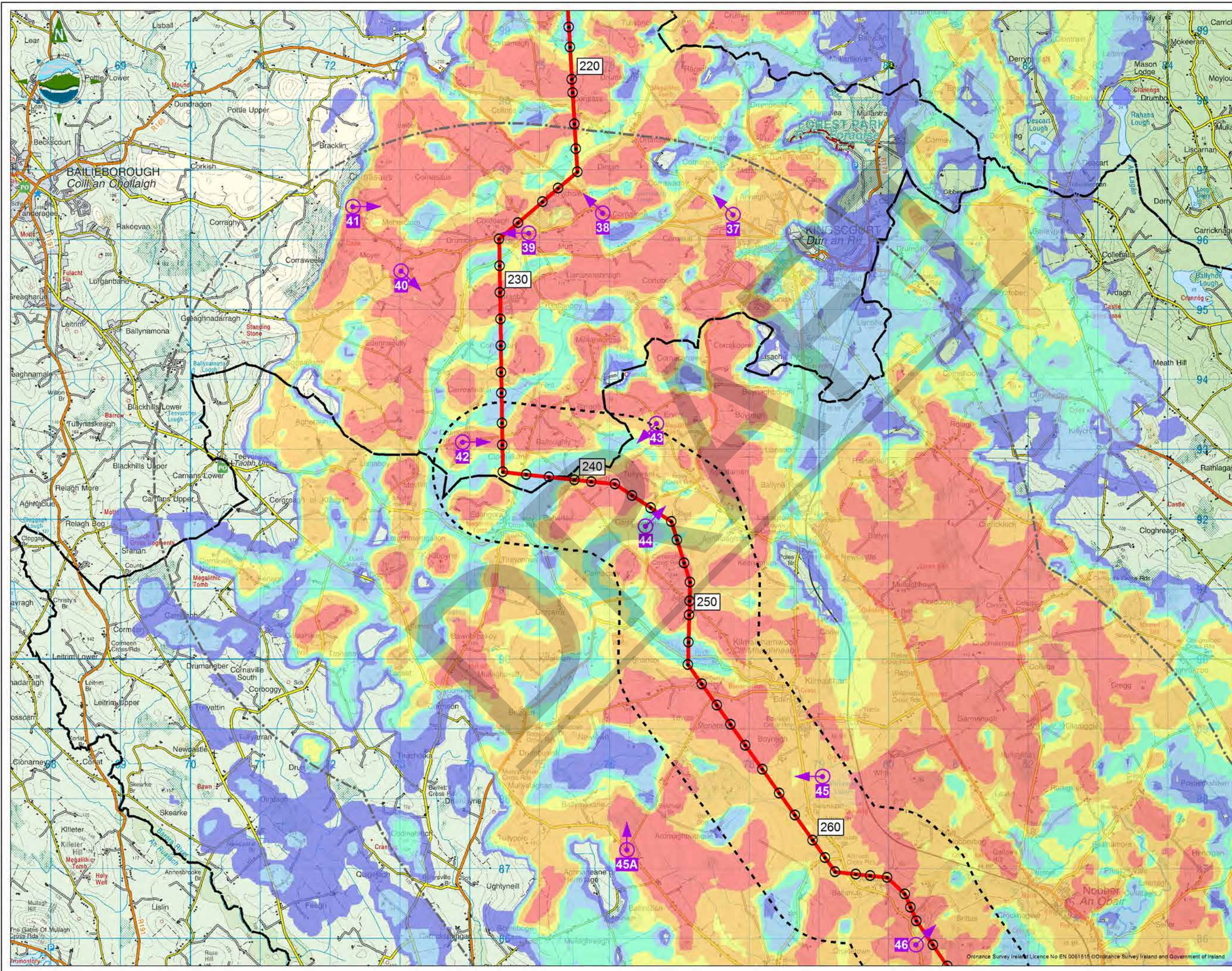
Project Director: Deirdre Black

URS Ireland Limited  
410 / 411 Q House, 76 Furze Road,  
Sandyford, Dublin 18  
Ireland  
Tel: +353-(0)1-2933200  
Fax: +353-(0)1-2933201  
www.urs.com

Issue: **A**

6244 **FIGURE 11.7 (MSA)**





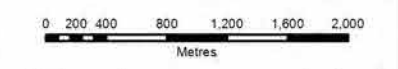
**Legend**

- Proposed Tower Location
- Proposed Line Route
- Photomontage Location
- 1km from the Proposed Development
- 5km from the Proposed Development
- County Boundary

**Zone of Theoretical Visibility Mapping**

This mapping indicates areas from which the proposed development is *theoretically* visible. It is important to note that the mapping does not indicate areas from which the proposed development *will* be visible. The ZTV mapping should therefore be used in conjunction with photomontages in order to ascertain the difference between *theoretical* and *actual* visibility. This ZTV has been prepared based on an observer's height of 1.6m.

- 1-5 Structures Theoretically Visible
- 6-10 Structures Theoretically Visible
- 11-15 Structures Theoretically Visible
- 16-20 Structures Theoretically Visible
- 21-30 Structures Theoretically Visible
- 31+ Structures Theoretically Visible



Issue	Date	Description	By	Chkd
C	FEB 2015	Update following design review	M.S.	J.S.
B	DEC 2014	Issued	M.S.	D.B.
A	JAN 2014	Issued	M.S.	D.B.

Client:

Project:  
NORTH-SOUTH 400 kV  
INTERCONNECTION DEVELOPMENT

Title:  
MEATH STUDY AREA  
ZONE OF THEORETICAL VISIBILITY  
AND PHOTOMONTAGE LOCATIONS  
SHEET 1 OF 5

Scale @ A3: 1:50,000 **DRAFT**

Prepared by: M.Skiba      Checked: D.Black      Date: February 2015

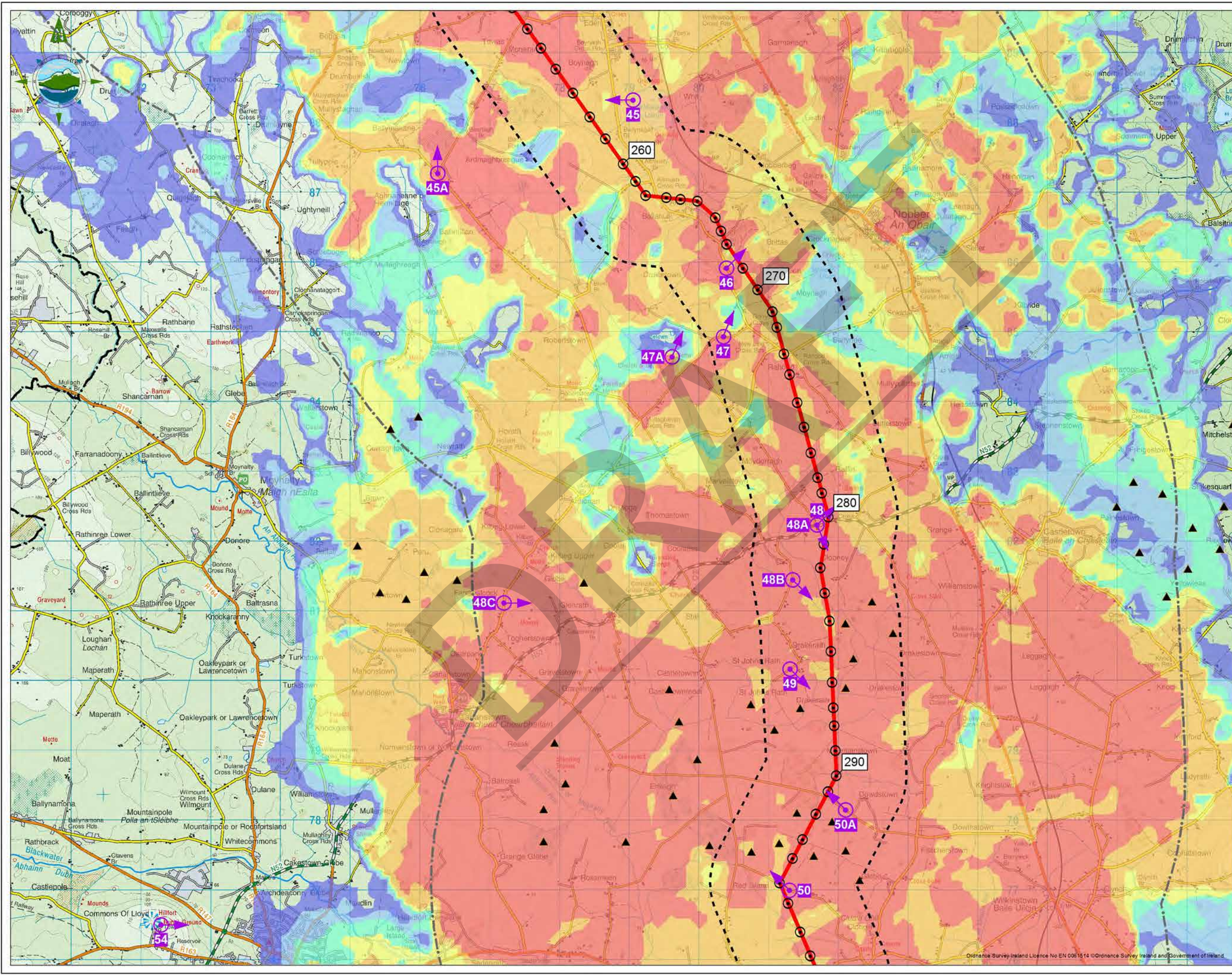
Project Director: Deirdre Black

URS Ireland Limited  
410 / 411 Q House, 76 Furze Road  
Sandyford, Dublin 18  
Ireland  
tel: +353-(0)1-2933200  
fax: +353-(0)1-2933201  
www.urs.com

Issue: **C**  
6244 **FIGURE 11.8 (MSA)**

Ordnance Survey Ireland Licence No EN 0061515 © Ordnance Survey Ireland and Government of Ireland



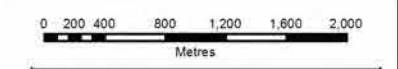


- Legend**
- Proposed Tower Location
  - Proposed Line Route
  - Photomontage Location
  - 1km from the Proposed Development
  - 5km from the Proposed Development
  - County Boundary
  - Proposed Emlagh Wind Farm

**Zone of Theoretical Visibility Mapping**

This mapping indicates areas from which the proposed development is *theoretically* visible. It is important to note that the mapping does not indicate areas from which the proposed development *will* be visible. The ZTV mapping should therefore be used in conjunction with photomontages in order to ascertain the difference between *theoretical* and *actual* visibility. This ZTV has been prepared based on an observer's height of 1.6m.

- 1-5 Structures Theoretically Visible
- 6-10 Structures Theoretically Visible
- 11-15 Structures Theoretically Visible
- 16-20 Structures Theoretically Visible
- 21-30 Structures Theoretically Visible
- 31+ Structures Theoretically Visible



B	DEC 2014	Issued	M.S.	D.B.
A	JAN 2014	Issued	M.S.	D.B.
Issue	Date	Description	By	Check



Project:  
**NORTH-SOUTH 400 kV  
 INTERCONNECTION DEVELOPMENT**

Title:  
**MEATH STUDY AREA  
 ZONE OF THEORETICAL VISIBILITY  
 AND PHOTOMONTAGE LOCATIONS  
 SHEET 2 OF 5**

Scale @ A3: **1:50,000 DRAFT**

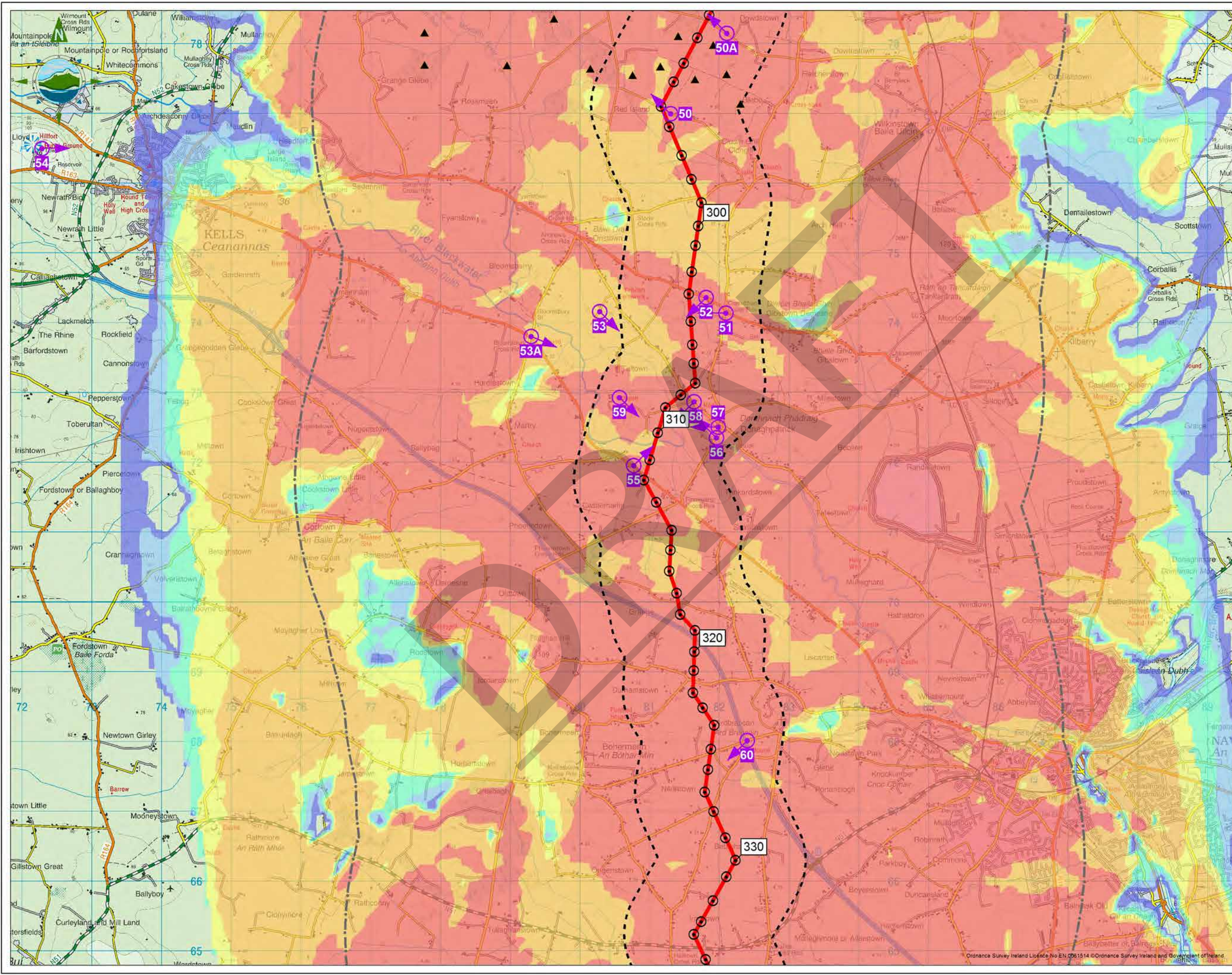
Prepared by: M. Skiba  
 Checked: D. Black  
 Date: December 2014

Project Director: Deirdre Black

URS Ireland Limited  
 410 / 411 O House, 76 Furze Road  
 Sandycove, Dublin 18  
 Ireland  
 Tel: +353-(0)1-2933200  
 Fax: +353-(0)1-2933201  
 www.urs.com

Issue:  
**B**



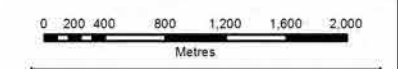


- Legend**
- Proposed Tower Location
  - Proposed Line Route
  - Photomontage Location
  - 1km from the Proposed Development
  - 5km from the Proposed Development
  - Proposed Emlagh Wind Farm

**Zone of Theoretical Visibility Mapping**

This mapping indicates areas from which the proposed development is *theoretically* visible. It is important to note that the mapping does not indicate areas from which the proposed development *will* be visible. The ZTV mapping should therefore be used in conjunction with photomontages in order to ascertain the difference between *theoretical* and *actual* visibility. This ZTV has been prepared based on an observer's height of 1.6m.

- 1-5 Structures Theoretically Visible
- 6-10 Structures Theoretically Visible
- 11-15 Structures Theoretically Visible
- 16-20 Structures Theoretically Visible
- 21-30 Structures Theoretically Visible
- 31+ Structures Theoretically Visible



Issue	Date	Description	By	Check
B	DEC 2014	Issued	M.S.	D.B.
A	JAN 2014	Issued	M.S.	D.B.



Project:  
**NORTH-SOUTH 400 kV  
 INTERCONNECTION DEVELOPMENT**

Title:  
**MEATH STUDY AREA  
 ZONE OF THEORETICAL VISIBILITY  
 AND PHOTOMONTAGE LOCATIONS  
 SHEET 3 OF 5**

Scale @ A3: **1:50,000 DRAFT**

Prepared by: M. Skiba  
 Checked: D. Black  
 Date: December 2014  
 Project Director: Deirdre Black

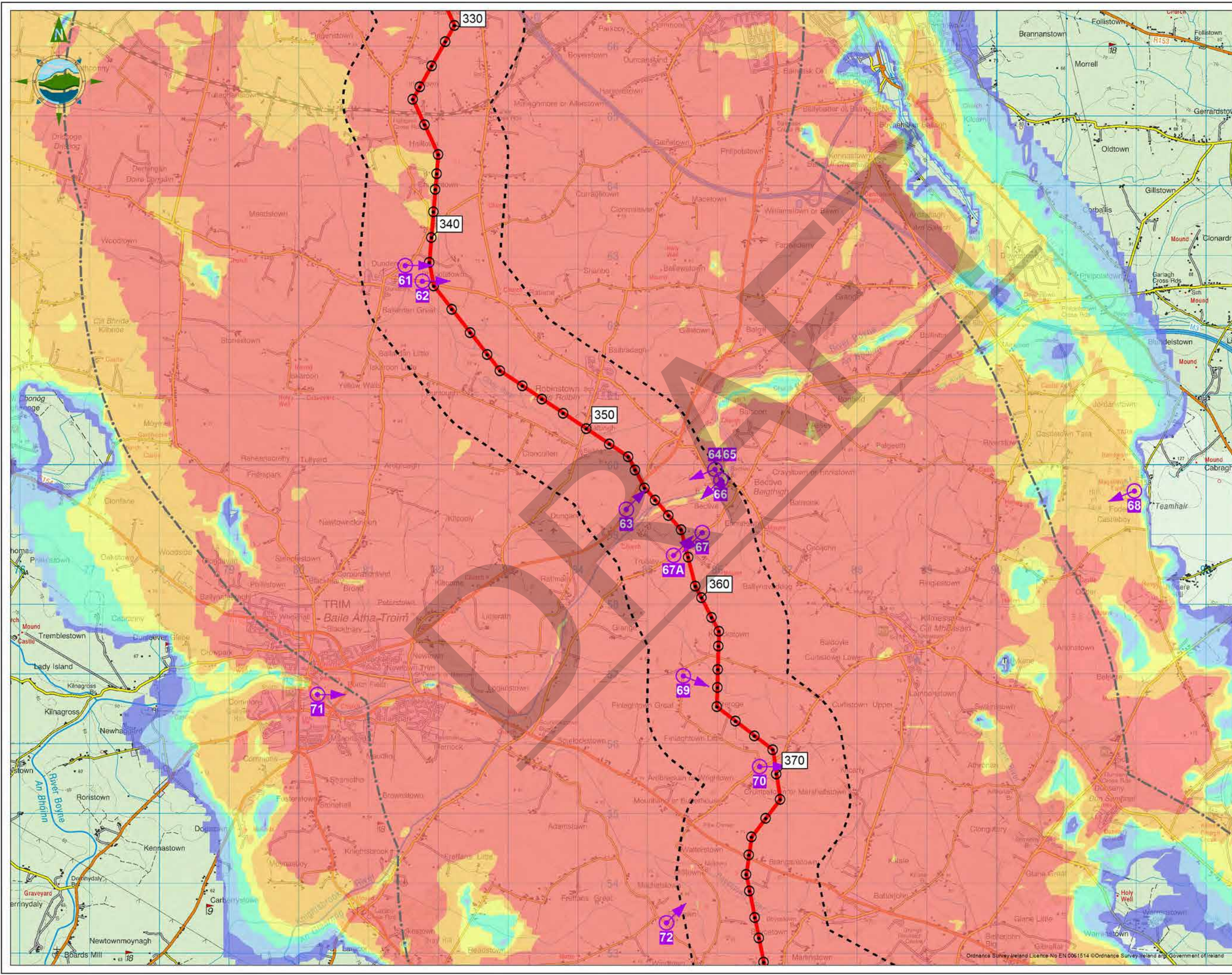
**URS TOBIN**

URS Ireland Limited  
 410 / 411 O House, 76 Furze Road  
 Sandyford, Dublin 18  
 Ireland  
 Tel: +353-(0)1-2933200  
 Fax: +353-(0)1-2933201  
 www.urs.com

Issue:  
**B**

Ordnance Survey Ireland Licence No EN 0061514 © Ordnance Survey Ireland and Government of Ireland





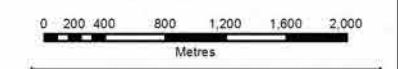
**Legend**

- Proposed Tower Location
- Proposed Line Route
- Photomontage Location
- 1km from the Proposed Development
- 5km from the Proposed Development

**Zone of Theoretical Visibility Mapping**

This mapping indicates areas from which the proposed development is *theoretically* visible. It is important to note that the mapping does not indicate areas from which the proposed development *will* be visible. The ZTV mapping should therefore be used in conjunction with photomontages in order to ascertain the difference between *theoretical* and *actual* visibility. This ZTV has been prepared based on an observer's height of 1.6m.

- 1-5 Structures Theoretically Visible
- 6-10 Structures Theoretically Visible
- 11-15 Structures Theoretically Visible
- 16-20 Structures Theoretically Visible
- 21-30 Structures Theoretically Visible
- 31+ Structures Theoretically Visible



Issue	Date	Description	By	Chk'd
B	DEC 2014	Issued	M.S.	D.B.
A	JAN 2014	Issued	M.S.	D.B.

Client:

Project:

NORTH-SOUTH 400 kV INTERCONNECTION DEVELOPMENT

Title:

MEATH STUDY AREA ZONE OF THEORETICAL VISIBILITY AND PHOTOMONTAGE LOCATIONS SHEET 4 OF 5

Scale @ A3: 1:50,000 **DRAFT**

Prepared by: M. Skiba      Checked: D. Black      Date: December 2014

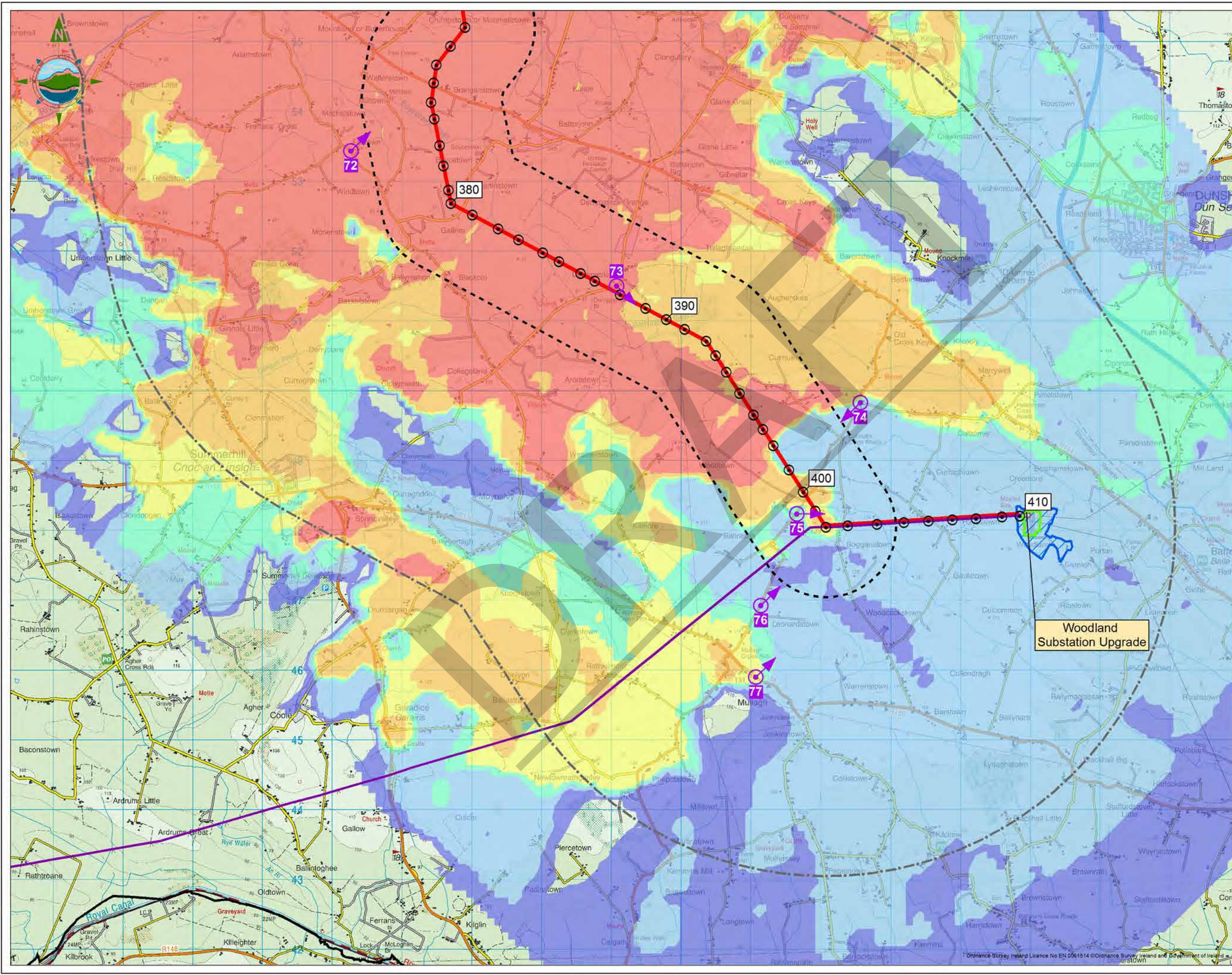
Project Director: Deirdre Black

URS Ireland Limited  
410 / 411 Q House, 76 Furze Road  
Sandyford, Dublin 18  
Ireland  
tel: +353-(0)1-2933200  
fax: +353-(0)1-2933201  
www.urs.com

Issue: **B**

6244 FIGURE 11.11 (MSA)



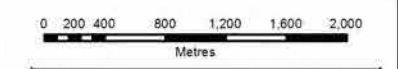


- Legend**
- Proposed Tower Location
  - Proposed Line Route
  - Existing 400 kV Line (To be upgraded)
  - Existing Oldstreet-Woodland 400 kV Line
  - Woodland Substation Extension Area
  - Existing Woodland Substation Boundary
  - ESB Property Boundary
  - Photomontage Location
  - 45
  - 1km from the Proposed Development
  - 5km from the Proposed Development
  - County Boundary

**Zone of Theoretical Visibility Mapping**

This mapping indicates areas from which the proposed development is *theoretically* visible. It is important to note that the mapping does not indicate areas from which the proposed development *will* be visible. The ZTV mapping should therefore be used in conjunction with photomontages in order to ascertain the difference between *theoretical* and *actual* visibility. This ZTV has been prepared based on an observer's height of 1.6m.

- 1-5 Structures Theoretically Visible
- 6-10 Structures Theoretically Visible
- 11-15 Structures Theoretically Visible
- 16-20 Structures Theoretically Visible
- 21-30 Structures Theoretically Visible
- 31+ Structures Theoretically Visible



Issue	Date	Description	M.S.	D.S.
A	JAN 2014	Issue		

Client:

Project:

NORTH-SOUTH 400 kV INTERCONNECTION DEVELOPMENT

Title:

MEATH STUDY AREA ZONE OF THEORETICAL VISIBILITY AND PHOTOMONTAGE LOCATIONS SHEET 5 OF 5

Scale @ A3: 1:50,000 **DRAFT**

Prepared by: M. Skiba  
Checked: D. Black  
Date: January 2014

Project Director: Deirdre Black

URS Ireland Limited  
410 / 411 O House, 76 Furze Road  
Sandyford, Dublin 18  
Ireland  
Tel: +353-(0)1-2933200  
Fax: +353-(0)1-2933201  
www.urs.com

6244 FIGURE 11.12 (MSA) Issue: A